

# CRIMSON 2 TUTORIAL

TU0026

## Title: Emulator

### DESCRIPTION



The Emulator provides a unique facility to design and test your application. This not only allows you to test the user interface portion of your G3 HMI configuration; it also allows you to test data logging and even the web server!

### BENEFITS

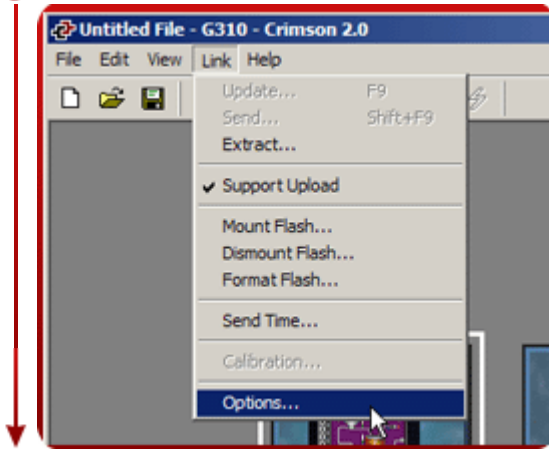
- Test your database directly on computer, no hardware required.
- Visualize the web server and log files to preview data available for your customer.
- Simplify database development and save time by testing your program enhancement straight away.

### EXAMPLE

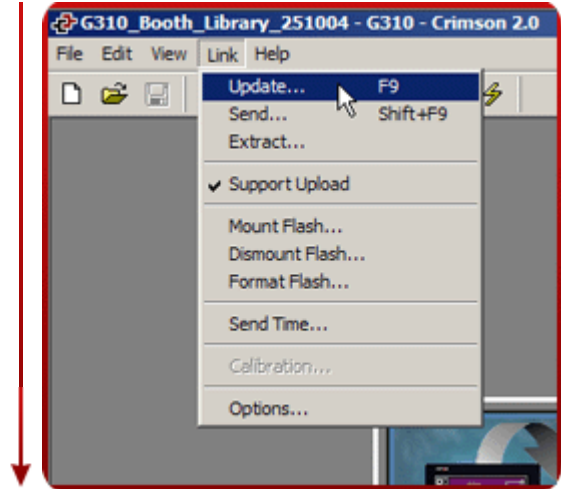
A special purpose machine manufacturer develops a new database for each new project. The emulator gives him the opportunity to review and test his database design before hardware delivery, saving time when on site testing.

## SETTING UP THE EMULATOR

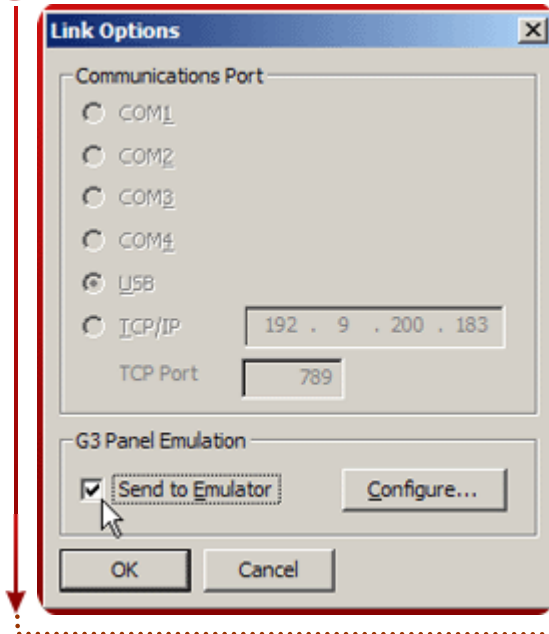
**Step 1** Click on Link>Option,



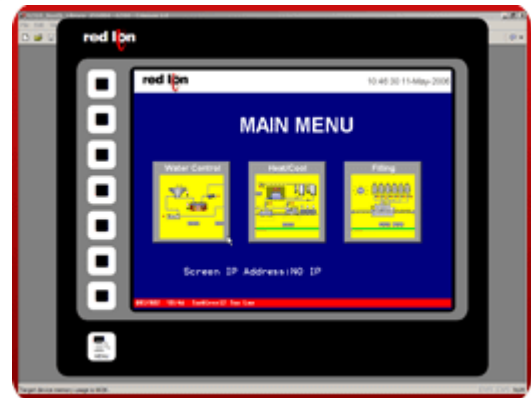
**Step 3** Click on Link>Update or F9 to download your application in the Emulator,



**Step 2** Select "Send to Emulator",



**Step 4** The emulated G3 pops up on your PC screen,



Emulator setup complete!

Reference: <http://www.redlion.net/g3features/G3 Feature - Emulator.html>

For more information on Crimson 2.0, refer to the manual.