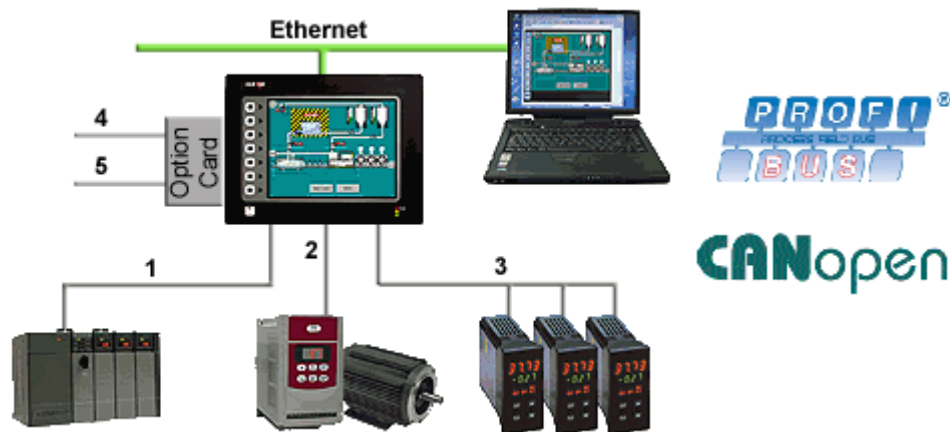


CRIMSON 2 TUTORIAL

TU0001

Title: Multi Communication Ports

DESCRIPTION



With three serial ports standard, (up to five with optional expansion card), and an Ethernet port capable of running four protocols, the G3 is the most powerful communications platform available today. Pick the best-in-class PLC, drive, temperature controllers, etc. for your next machine. The Red Lion G3 will make sure they communicate seamlessly to one another.

BENEFITS

- Save time by avoiding communication card setup and programming in PLCs and other devices
- Embedded complete drivers for all major automation manufactures (200+)
- No extra hardware required when adding new equipment.

EXAMPLE

A machine manufacturer provides extra functionalities for his customer by feeding back all process data from the multiple devices necessary for his plastic injection units.

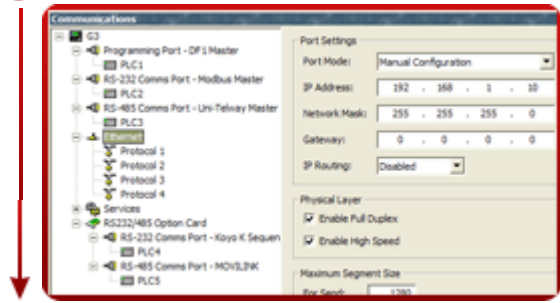


CONFIGURING MULTIPLE PROTOCOLS IN JUST 5 STEPS

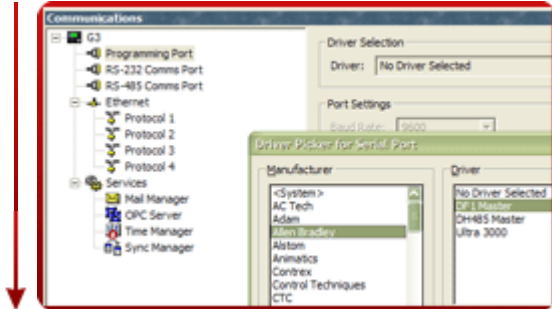
Step 1 Enter the "Communications" module,



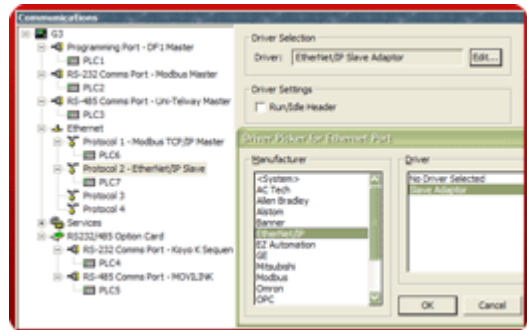
Step 4 Enable the Ethernet port,



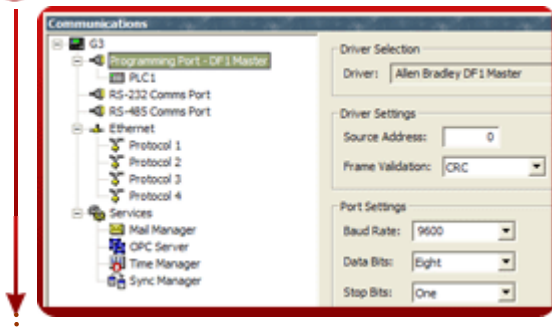
Step 2 Select a serial port and choose the manufacturer,



Step 5 Select an Ethernet protocol.



Step 3 Select the driver,



Communication setup complete!

Reference: <http://www.redlion.net/g3features/G3 Feature - Comm Ports.html>

For more information on Crimson 2.0, refer to the manual.