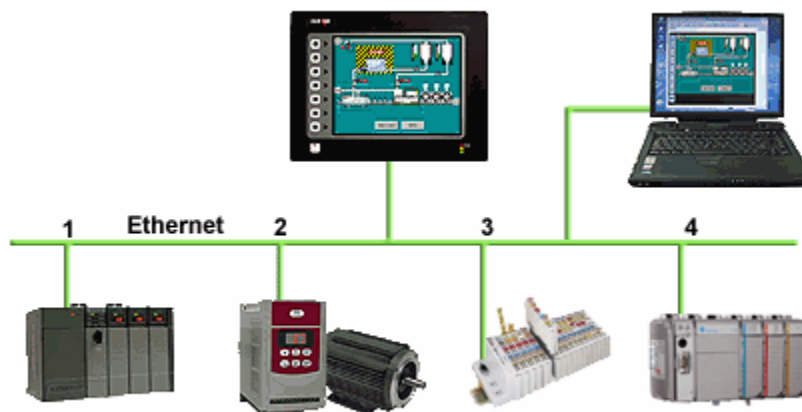


# CRIMSON 2 TUTORIAL

TU0003

## Title: Ethernet Connectivity

### DESCRIPTION



With an Ethernet port capable of running four protocols, in addition to all the serial ports, the G3 is the most powerful communications platform available today. Pick the best-in-class PLC, drive, temperature controllers, etc. for your next machine. The Red Lion G3 will make sure they communicate seamlessly to one another.

### BENEFITS

- Connect any Ethernet enable equipment to the HMI and access the devices data.
- Up to 4 different protocols provide extensive communication on Ethernet with more than 50 built in drivers for easy programming.
- Gateway functionalities to transfer data from any HMI serial port to Ethernet and Vice-Versa. No programming required and transparent to the user.

### EXAMPLE

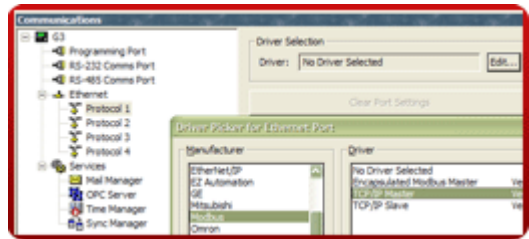
By upgrading the current production line HMIs with Red Lion G3s, maintenance was able not only to connect to the PLCs via serial but also to remote I/Os on the main Ethernet network. Data are exchanged using the HMI built in Gateway providing extended information to the local PLC. Ethernet also allows the transfer of general production data to a server for production manager review.

# ETHERNET COMMUNICATION IN JUST 4 STEPS

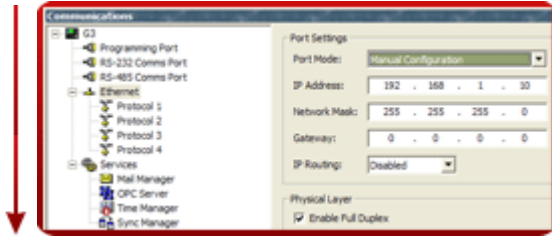
Step 1 Enter the "Communications" module,



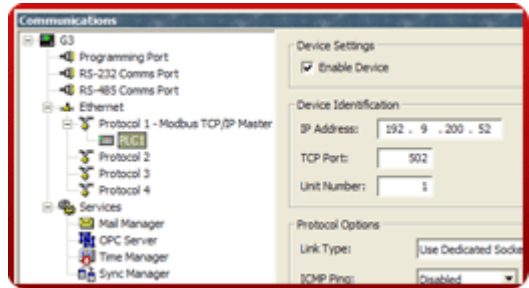
Step 3 Select the manufacturer and pick a driver,



Step 2 Select the Ethernet port and enter the G3's IP address,



Step 4 Select the manufacturer and pick a driver,



Ethernet communication setup complete!

Reference: <http://www.redlion.net/g3features/G3 Feature - Ethernet.html>

For more information on Crimson 2.0, refer to the manual.