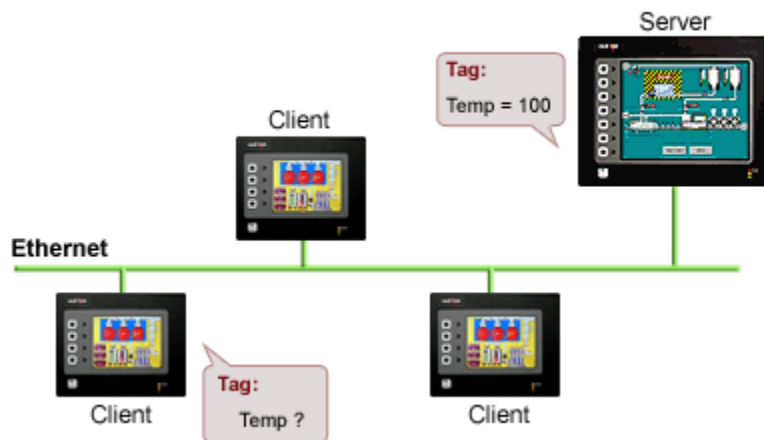


CRIMSON 2 TUTORIAL

TU0004

Title: OPC Link

DESCRIPTION



The G3's OPC link is an easy way to connect multiple G3s together. G3 to G3 communication is achieved in minutes using direct tag access from one unit to another.

BENEFITS

- Easily connect HMIs together using Ethernet,
- Exchange data seamlessly between connected equipment.

EXAMPLE

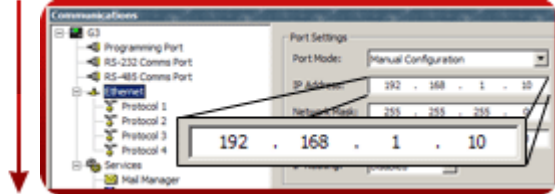
An OEM manufacturer provides 2 HMIs on his Autoclave system, one on each side. Each HMI is identical and allow his customer to control the machine from any sides. OPC Link gives the manufacturer an easy way to duplicate his database by simply remapping in the tags in Excel, thus avoiding complex reprogramming for the slave device.

Programming the Server

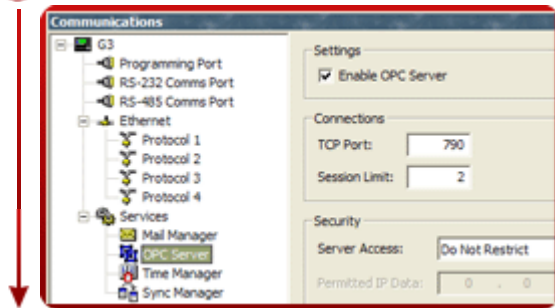
Step 1 Enter the "Communications" module,



Step 2 Select the Ethernet port and enter the G3 server IP address,



Step 3 Activate the OPC server in the G3,



Step 4 Set up your tags as desired in the database,

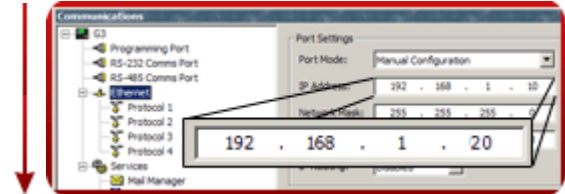


Programming the Client

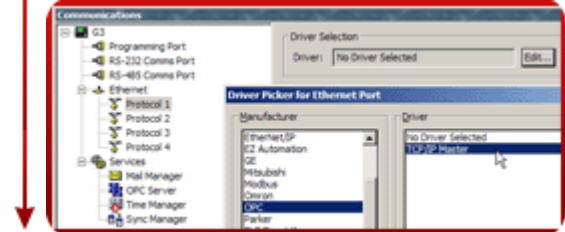
Step 5 Enter the "Communications" module,



Step 6 Select the Ethernet port and enter the G3 client IP address,



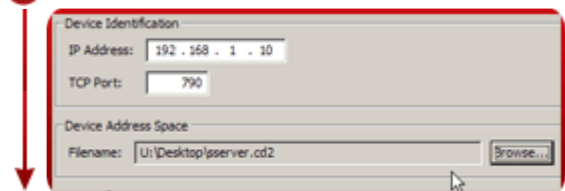
Step 7 Select Protocol 1 and set up the OPC TCP/IP Master driver,



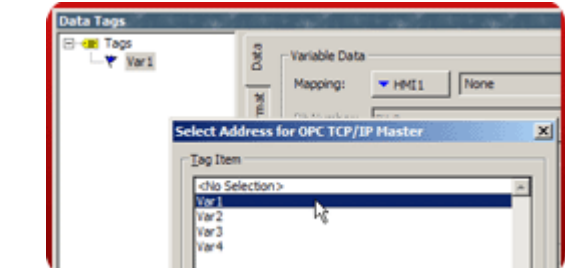
Step 8 Select the HMI1 and enter the server IP address,



Step 9 Reference the server's database,



Step 10 In "Data Tags", the client tags can be mapped directly to the server tags.



Reference: http://www.redlion.net/g3features/G3_Feature_OPClink.html

For more information on Crimson 2.0, refer to the manual.