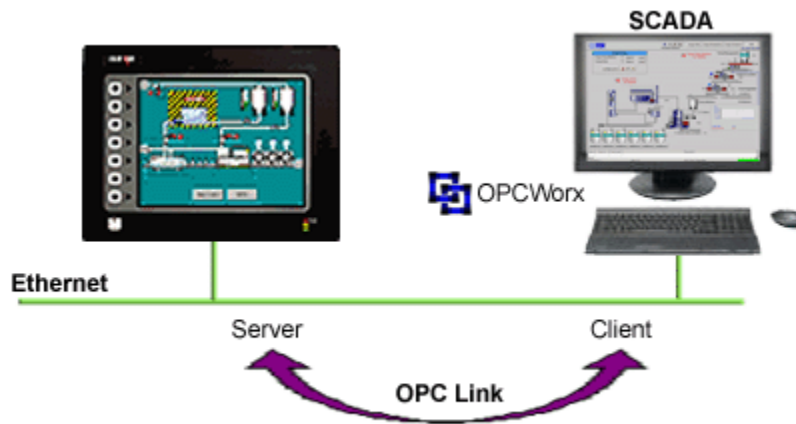


# CRIMSON 2 TUTORIAL

TU0005

## Title: OPC Server

### DESCRIPTION



Red Lion's OPCWorx is a configuration tool for our OPC servers. This easy-to-use software tool allows you to create and configure an OPC server to communicate with the G3 series HMI, the Data Station Plus or the Enhanced Master, as well as any device that supports Modbus.

### BENEFITS

- Connect a SCADA package and access the G3 tags in just few steps,
- Provides SCADA connectivity for the G3 platform,

### EXAMPLE

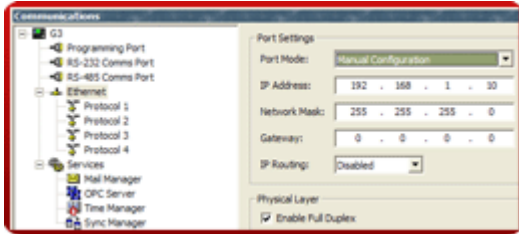
A production manager decides to centralize data from multiple extrusion lines. Each line is composed of multiple controllers and a G3 HMI. By simply connecting the G3s to the corporate Ethernet network and installing OPCWorx software on the SCADA PC, the manager can now access any process data coming from the manufacturing floor.

# CONFIGURING A G3 TO SCADA CONNECTION IN JUST 5 STEPS

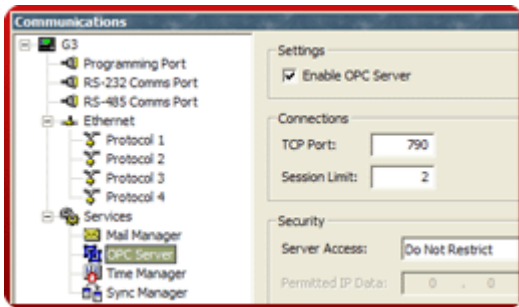
**Step 1** Enter the "Communications" module,



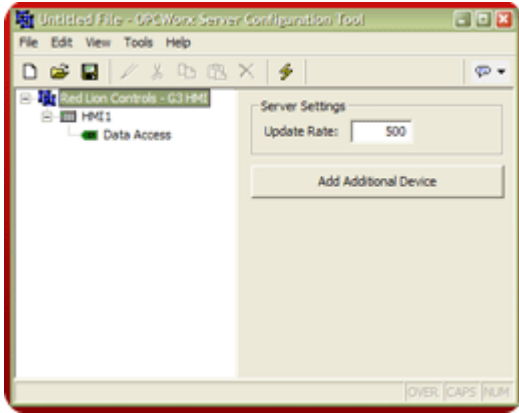
**Step 2** Select the Ethernet port and enter the G3's IP address,



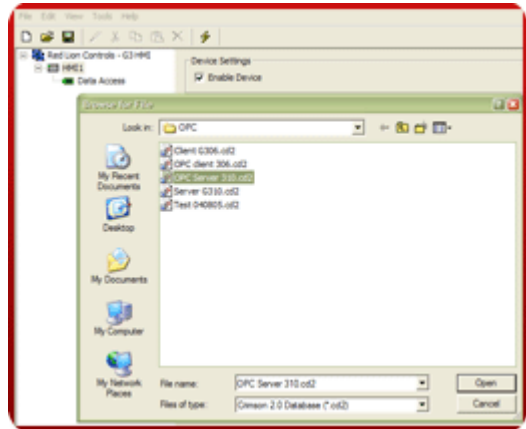
**Step 3** Enable the OPC server connection,



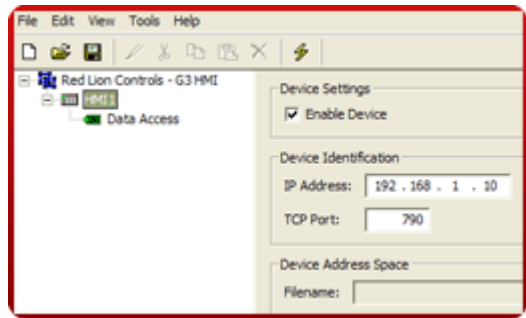
**Step 4** Run OPCWorx software on the PC with the SCADA package,



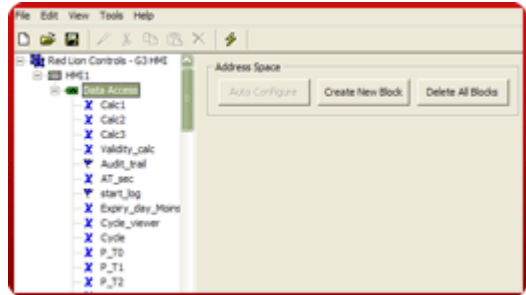
**Step 5** Reference the G3's database,



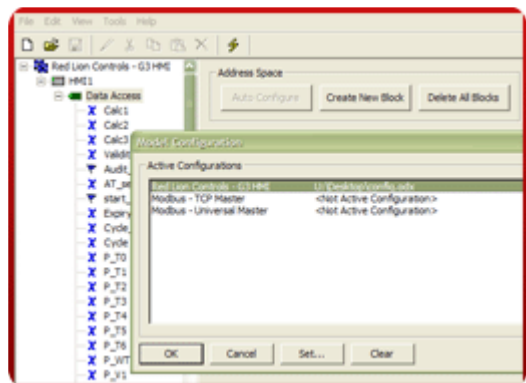
**Step 6** Enter the G3's IP address,



**Step 7** Click auto configure to get the tag list from the G3 database,



**Step 8** Activate the server.



Reference: [http://www.redlion.net/g3features/G3 Feature - OPC.html](http://www.redlion.net/g3features/G3%20Feature%20-%20OPC.html)  
 For more information on Crimson 2.0, refer to the manual.