



CRIMSON 2 TUTORIAL

TU0006

Title: Symbol Library

DESCRIPTION



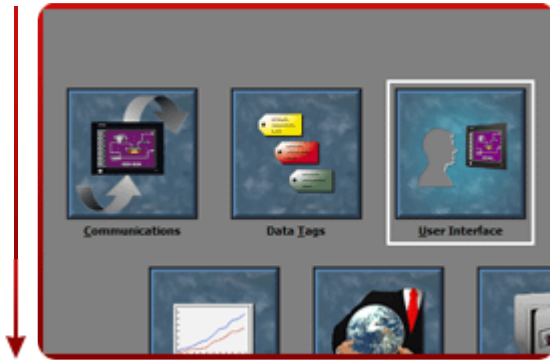
With over 4000 push buttons, tanks, motors and machinery—plus over 60 other categories!
Just a single mouse click, you can add professional quality graphics to your G3 display pages.

BENEFITS

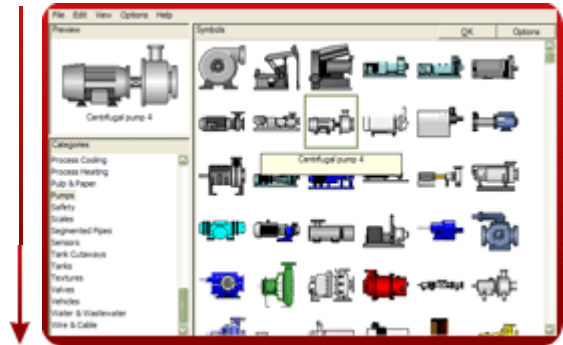
- Provides graphic close to reality for your application,
- Facilitate graphic database development,

ADD PROFESSIONAL GRAPHICS IN JUST 5 STEPS

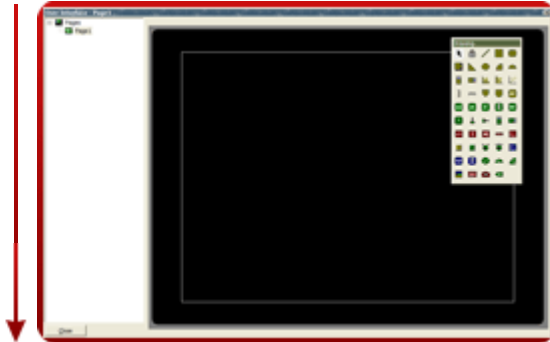
Step 1 Enter the "User Interface" module,



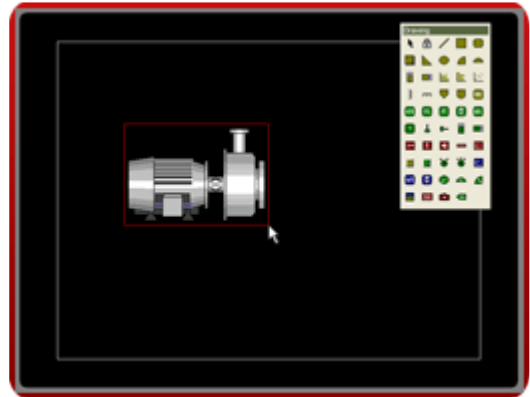
Step 4 Select a symbol and click ok,



Step 2 Click on the screen to get the drawing dialog box,



Step 5 Click and drag on to the screen to insert the symbol,



Step 3 Click on the symbol library,



Reference: <http://www.redlion.net/g3features/G3 Feature - Symbol Library.html>

For more information on Crimson 2.0, refer to the manual.