

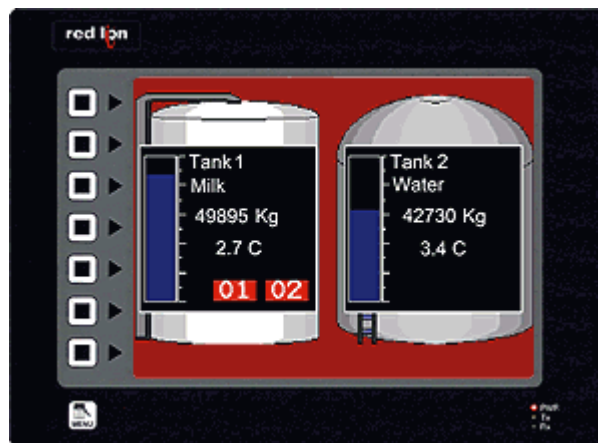


# CRIMSON 2 TUTORIAL

TU0007

## Title: Language and Unicode Characters

### DESCRIPTION



You can build your panel, and at time of shipment, customize the display to the language needed for your customer.

Crimson offers support for thousands of characters used in formats like Cyrillic or Thai. With a single button press, you can adjust the panel's operator language, allowing OEMs to use a single database when targeting multiple geographic markets.

### BENEFITS

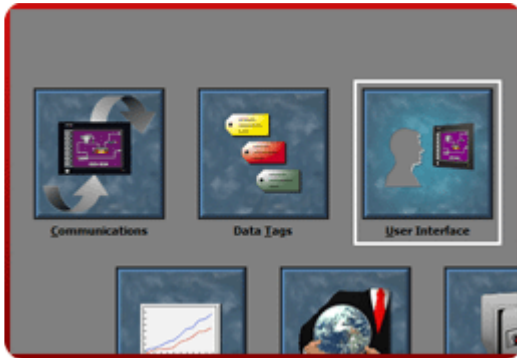
- Export your system internationally in the local language,
- Enhance the graphical aspect by using any fonts available in Windows.

### EXAMPLE

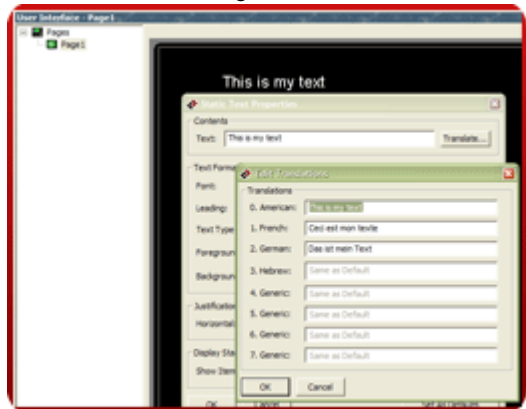
An OEM manufacturer has to support only one G3 database for all the different markets he is shipping to. Maintenance and upgrade are therefore easy as no version difference appears in-between languages.

## SET UP MULTIPLE LANGUAGES IN JUST 5 STEPS

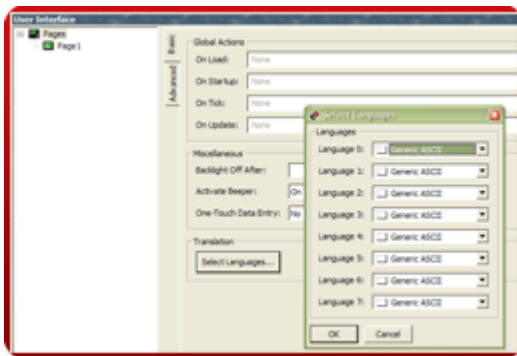
**Step 1** Enter the "User Interface" module,



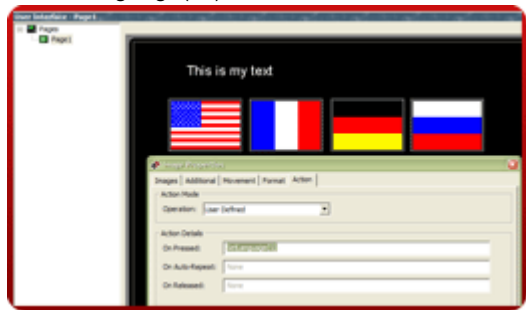
**Step 4** During programming, just click the translate buttons, to enter the right texts,



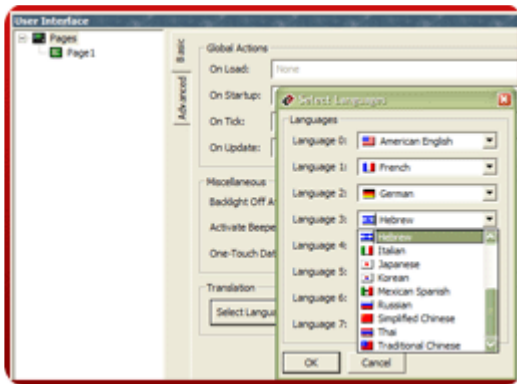
**Step 2** On "Pages", click "Select languages",



**Step 5** Languages can be selected using the `SelectLanguage(int)` function,



**Step 3** Define the languages you want,



Pressing the flags will switch languages!

Reference: [http://www.redlion.net/g3features/G3 Feature - Languages.html](http://www.redlion.net/g3features/G3%20Feature%20-%20Languages.html)

For more information on Crimson 2.0, refer to the manual.