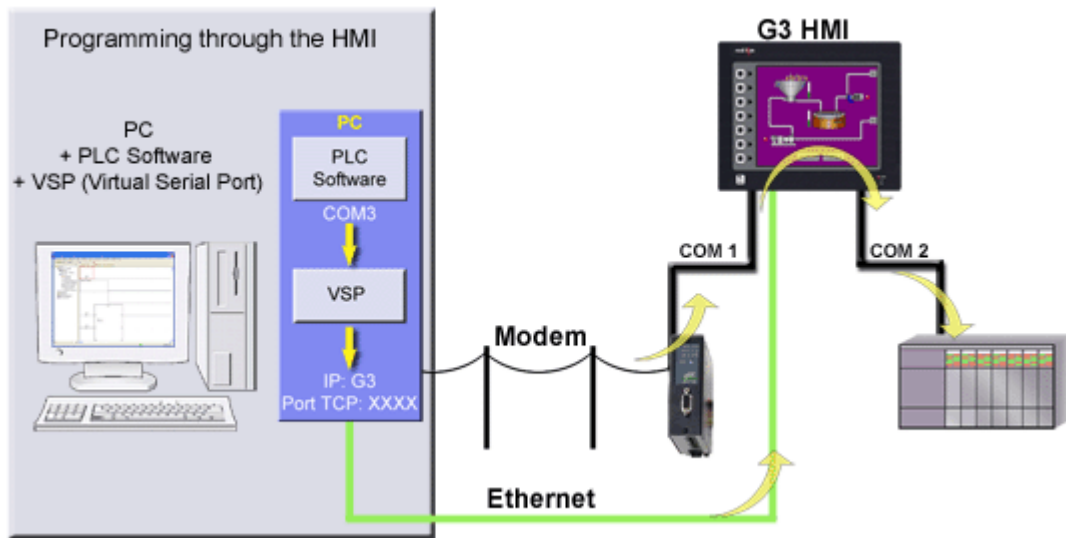


CRIMSON 2 TUTORIAL

TU0014

Title: Pass Through Programming

DESCRIPTION



Pass-through programming is a unique feature which allows you to program your connected devices remotely*. Using either a modem or an Ethernet connection, you can reprogram your PLC, motor drive, etc. from anywhere in the world.

BENEFITS

- Remotely maintenance your application by accessing any devices connected to the HMI,
- Save time and money by solving simple problems remotely,
- Upgrade your system remotely with the latest enhancement for your controller.

EXAMPLE

A power generator manufacturer can remotely access his rental generator and upload the latest patch for his controller or G3 database. In case of problem, databases can be looked at, debugged and download again.

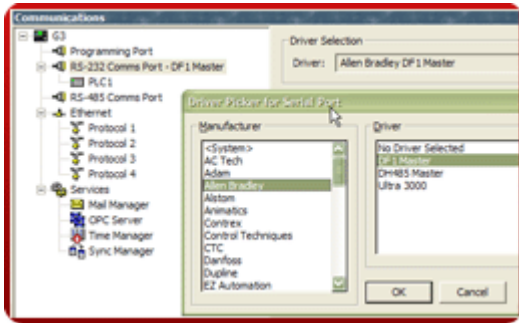


PASS-THROUGH PROGRAMMING IN JUST 7 STEPS

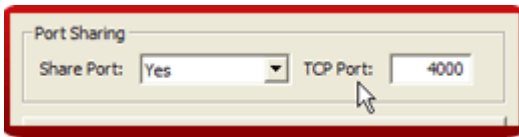
Step 1 Enter the "Communications" module,



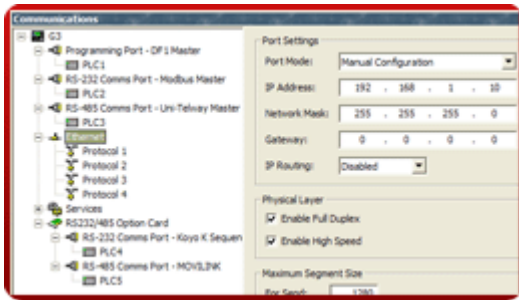
Step 2 Select the driver for your PLC,



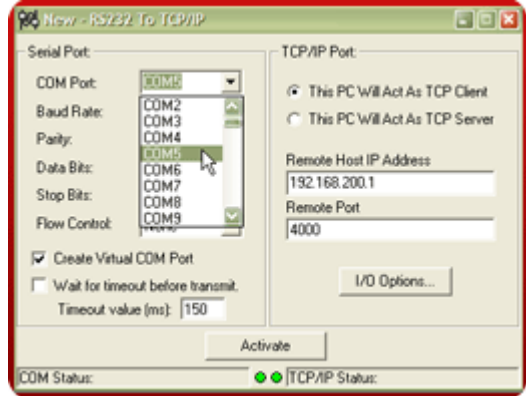
Step 3 Share the port with a TCP socket,



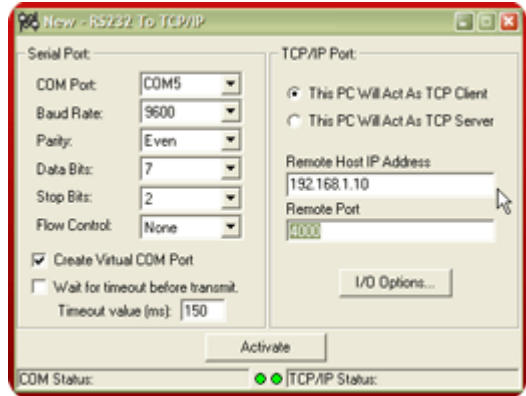
Step 4 Enable the G3's Ethernet port



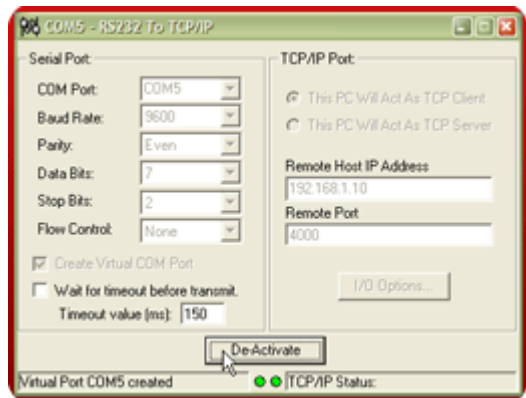
Step 5 Run any VSP Software (Example below is TCP Com**) and define the COM port your PLC software will be using,



Step 6 Define the host IP address, which is the G3, and the targeted TCP port,



Step 7 Activate the port.



Your PLC software is now ready to use this virtual port as if it was connected directly to the PLC.

Pass-through complete!

Reference: <http://www.redlion.net/g3features/G3 Feature - Symbol Library.html>
For more information on Crimson 2.0, refer to the manual.