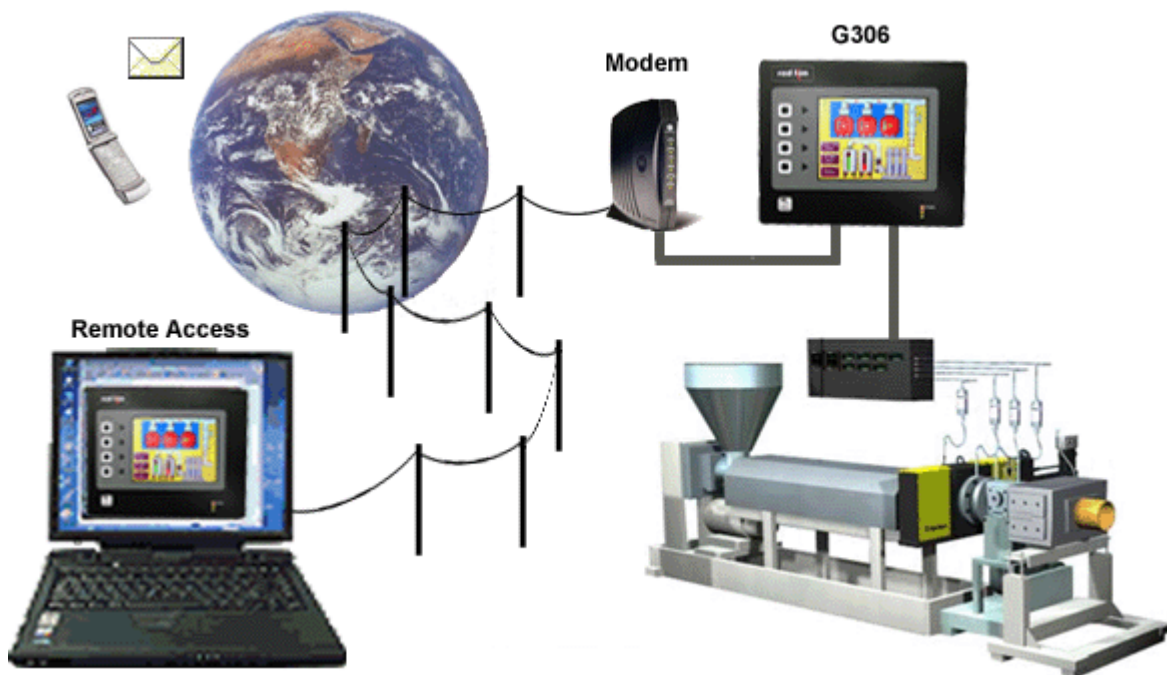


# CRIMSON 2 TUTORIAL

TU0015

## Title: Modem Connectivity

### DESCRIPTION



Access your system remotely with the G3's powerful modem connection capabilities. Connect to your equipment anywhere in the world via standard landline, GSM or GPRS modem.

### BENEFITS

- Easily access remotely your plant or system by just adding a modem.
- Remotely maintenance your application from anywhere,
- Save time and money in just using a simple RTC or GSM modem, no programming required.

### EXAMPLE

A remote mobile water treatment system does not have access to an ADSL line. Using a standard line and RTC modem, the main office is still able to remotely connect to the G3 web server. Operators can download data log files and initiate necessary action depending of the status.

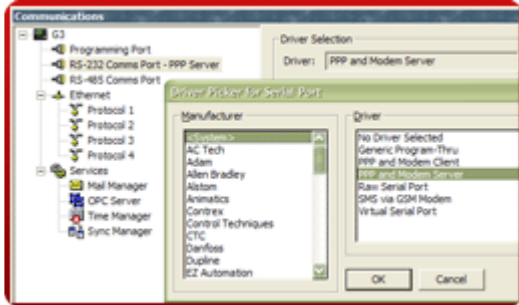


# G3 ACCESS VIA LANDLINE MODEM IN JUST 8 STEPS

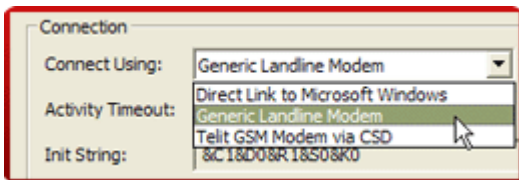
**Step 1** Enter the "Communications" module,



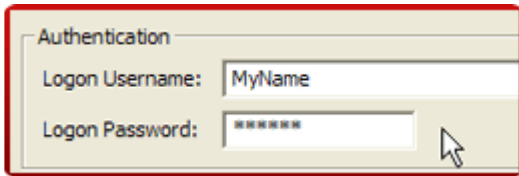
**Step 2** Select a serial port and choose the "PPP and Modem Server" driver,



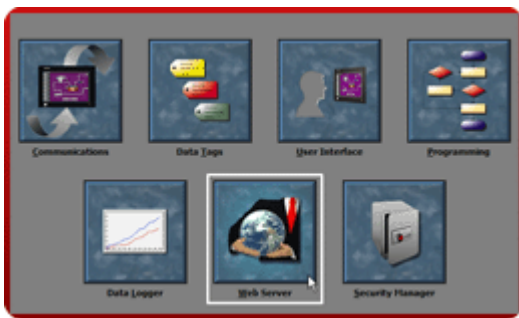
**Step 3** Select Generic Landline Modem,



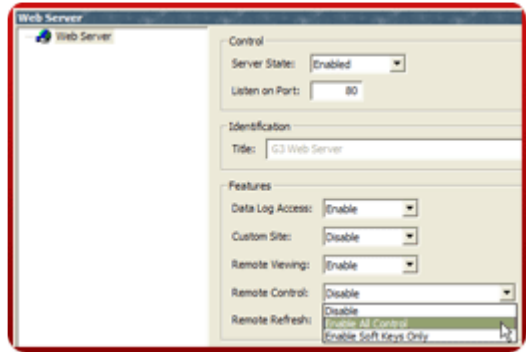
**Step 4** Enter a username and password to protect your connection,



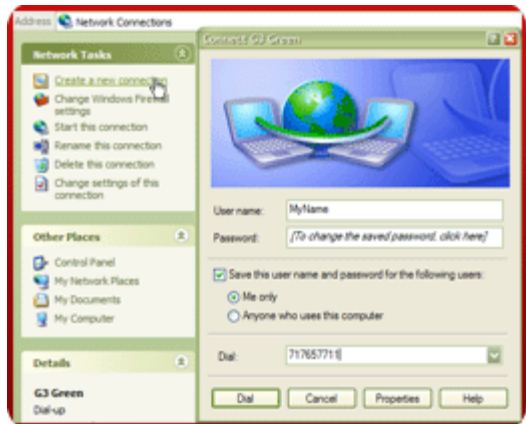
**Step 5** Enter the "Web Server" module,



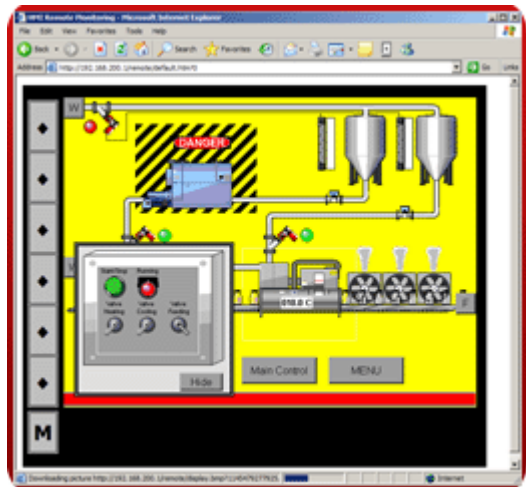
**Step 6** Activate the web server and choose options,



**Step 7** Create a connection on your PC to access the G3,



**Step 8** Call the G3 and run Internet Explorer to view the web server.



Modem connection complete!

Reference: <http://www.redlion.net/g3features/G3 Feature - Modem Connection.html>  
 For more information on Crimson 2.0, refer to the manual.