

# CRIMSON 2 TUTORIAL

TU0018

## Title: USB Connection

### DESCRIPTION



The USB programming port allows you to download even the largest databases at blistering speeds. Crimson 2.0 uses incremental download to ensure that only changes to the database are transferred. This means that changes can be made in seconds, thereby reducing your development time and simplifying the debugging process.

With the decline of serially equipped PCs, particularly laptops, you won't be forced to keep that old laptop around.

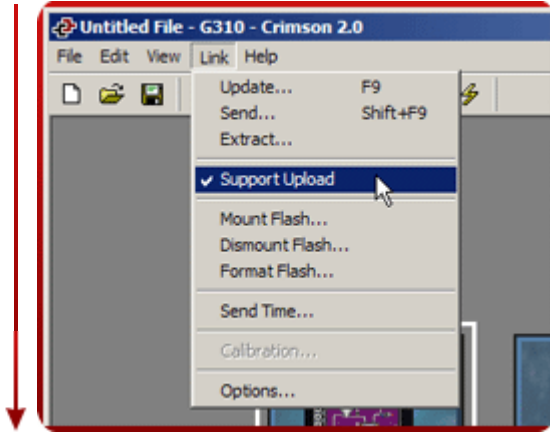
The USB port also offers access to the CompactFlash card mounted on the G3, which appears as an extra drive in Windows environments. This provides full access to the CompactFlash card.

### BENEFITS

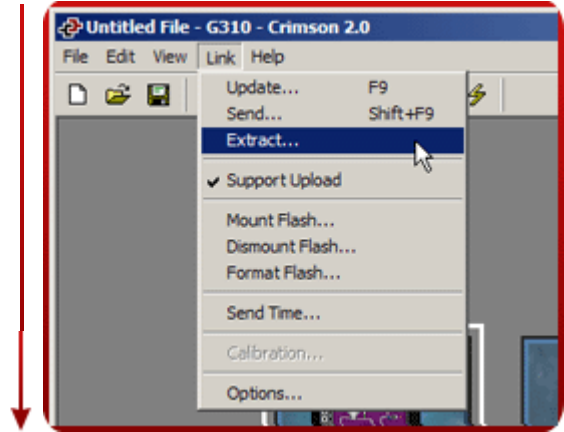
- Fast download allow easy testing when developing a database,
- No serial port necessary on your PC or Laptop,
- Standard cable for simple connection.

## DOWNLOAD AND EXTRACT

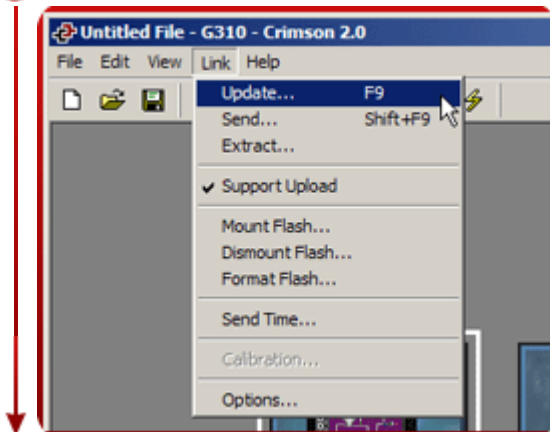
**Step 1** Checkmark the Support Upload to allow future upload,



**Step 3** To upload a database, select the Extract menu item,



**Step 2** Download via the Link menu,



**Step 4** Once uploaded, Crimson 2.0 will prompt you to save the database.



Download and extraction complete!

Retentive memory setup complete!

Reference: <http://www.redlion.net/G3features/G3 Feature - USB Download.html>

For more information on Crimson 2.0, refer to the manual.