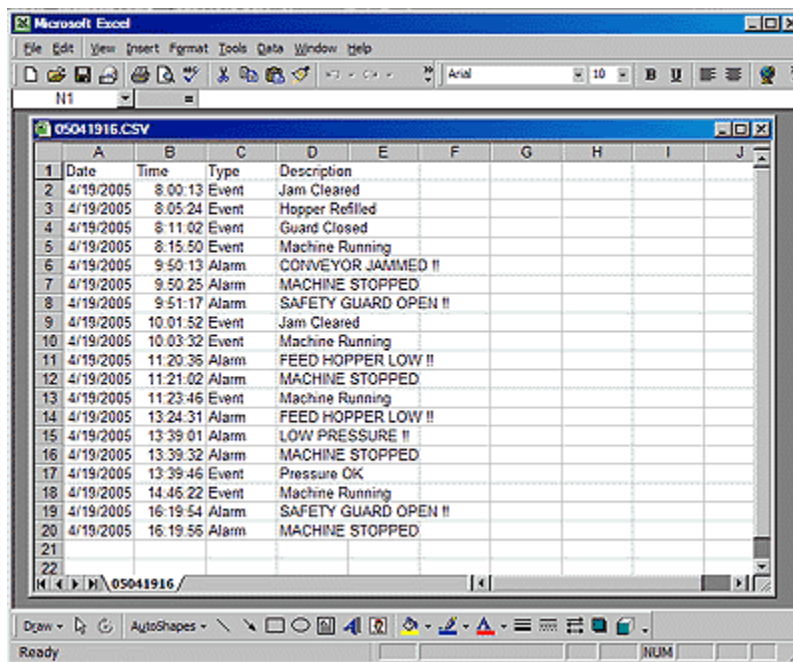


# CRIMSON 2 TUTORIAL

TU0023

## Title: Event Logging

### DESCRIPTION



	A	B	C	D	E	F	G	H	I	J
1	Date	Time	Type	Description						
2	4/19/2005	8:00:13	Event	Jam Cleared						
3	4/19/2005	8:05:24	Event	Hopper Refilled						
4	4/19/2005	8:11:02	Event	Guard Closed						
5	4/19/2005	8:15:50	Event	Machine Running						
6	4/19/2005	9:50:13	Alarm	CONVEYOR JAMMED !!						
7	4/19/2005	9:50:25	Alarm	MACHINE STOPPED						
8	4/19/2005	9:51:17	Alarm	SAFETY GUARD OPEN !!						
9	4/19/2005	10:01:52	Event	Jam Cleared						
10	4/19/2005	10:03:32	Event	Machine Running						
11	4/19/2005	11:20:35	Alarm	FEED HOPPER LOW !!						
12	4/19/2005	11:21:02	Alarm	MACHINE STOPPED						
13	4/19/2005	11:23:46	Event	Machine Running						
14	4/19/2005	13:24:31	Alarm	FEED HOPPER LOW !!						
15	4/19/2005	13:39:01	Alarm	LOW PRESSURE !!						
16	4/19/2005	13:39:32	Alarm	MACHINE STOPPED						
17	4/19/2005	13:39:46	Event	Pressure Ok						
18	4/19/2005	14:46:22	Event	Machine Running						
19	4/19/2005	16:19:54	Alarm	SAFETY GUARD OPEN !!						
20	4/19/2005	16:19:56	Alarm	MACHINE STOPPED						
21										
22										

The G3's event logger allows you to track machine events, providing critical information for troubleshooting and process improvement.

### BENEFITS

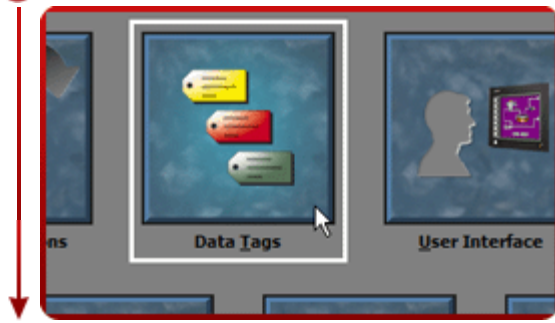
- Provides traceability for your system.
- History of your system helps maintenance finding problems origin.
- Built in event logger provides ready to use data for review.

### EXAMPLE

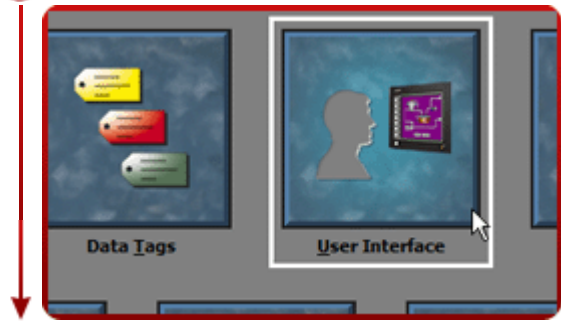
By monitoring events on linear production line, the origin of a break in a process can be found in seconds and fixed as quick as possible so production can resume.

# EVENT LOGGING IN 7 STEPS

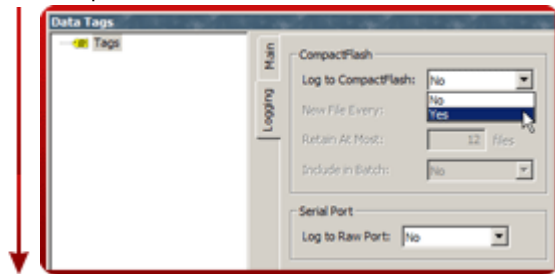
**Step 1** Enter the "Data Tags" module,



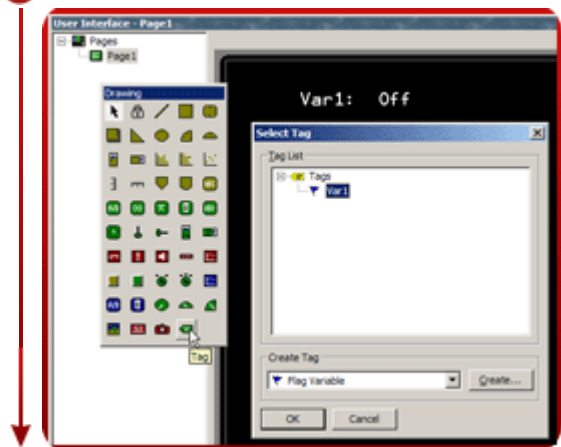
**Step 5** Enter the "User Interface" module,



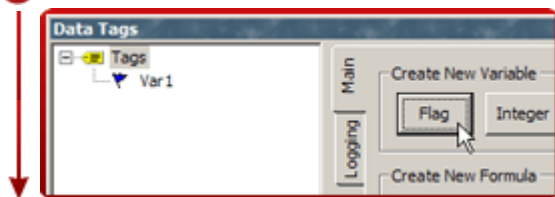
**Step 2** In the "Logging" tab, activate Log to CompactFlash,



**Step 6** Insert the flag on the screen,



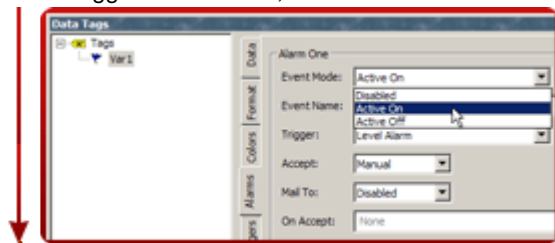
**Step 3** Create a flag variable,



**Step 7** Insert the event viewer,



**Step 4** Configure an alarm. This alarm will automatically be logged as an event,



When the flag turns on, it will create an alarm which is recorded in the event log and displayed by the event viewer. The viewer content is saved as a CSV file on the Compact Flash card.

Event Logging complete!

Reference: <http://www.redlion.net/g3features/G3 Feature - Event Logging.html>

For more information on Crimson 2.0, refer to the manual.