

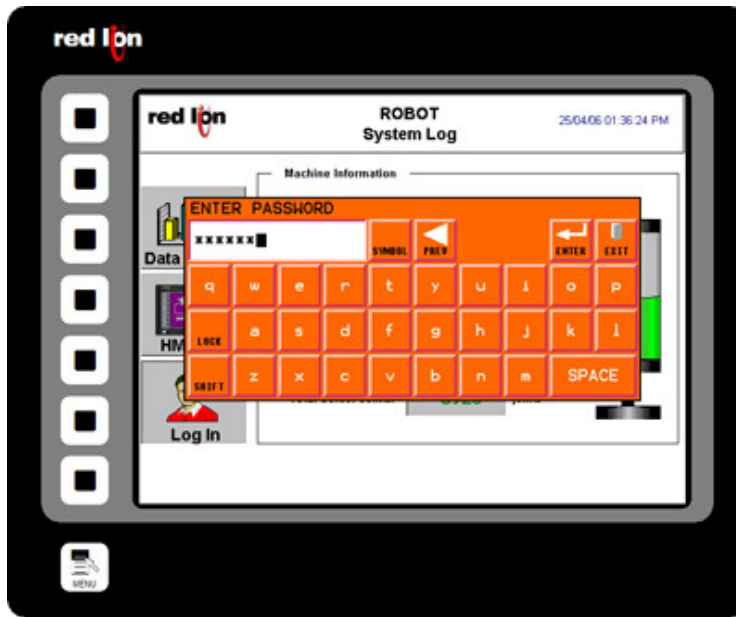


CRIMSON 2 TUTORIAL

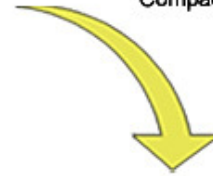
TU0024

Title: Security Logging

DESCRIPTION



Log actions to
Compact Flash



	A	B	C	D	E	F	G	H	I	J	K	L
1	Date	Time	Type	Tag	From	To	User					
2	4/25/2006	12:19:43	Startup									
3	4/25/2006	12:20:34	Logon				Operator					
4	4/25/2006	12:20:40	Change	ProgNb		0	12 Operator					
5	4/25/2006	12:20:52	Logoff				Operator					

Security Manager provides multi-user, multilevel password protection. The advanced security logger tracks operator actions as well as any data change for later review.

BENEFITS

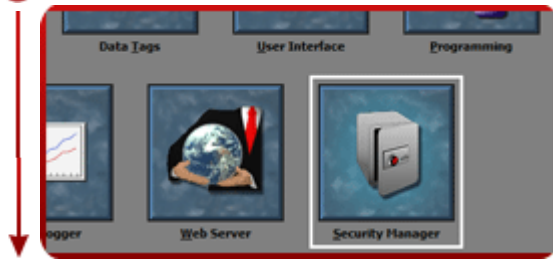
- Protect your machine from unauthorized operators and manage users and rights easily.
- Log all users actions for production follow up,
- Get the history of all your parameters modifications for fault finding and maintenance,

EXAMPLE

An OEM specialized in sterilization equipment provides his customer with multi-user password protection for his autoclaves system. Production error due to operator failure can be found with the security logger.

SECURE PAGE ACCESS IN 8 STEPS

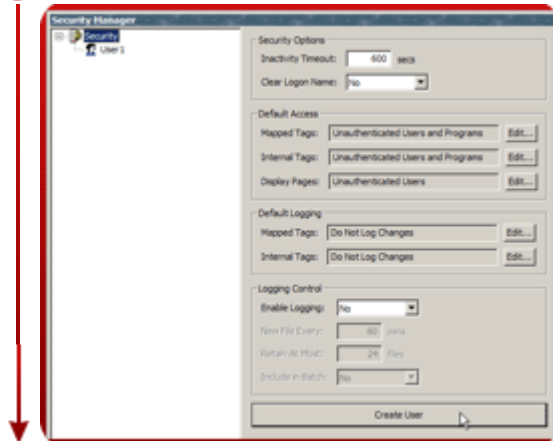
Step 1 Enter the "Security Manager" module,



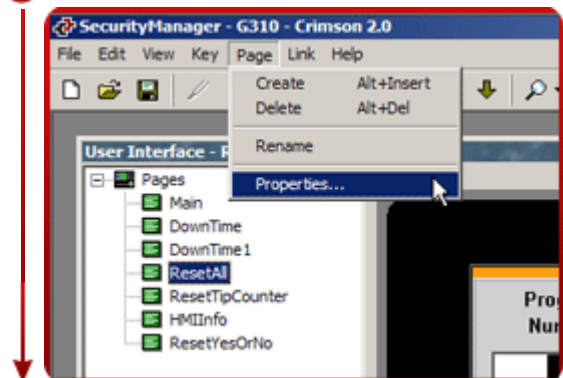
Step 6 Enter the "User Interface" module,



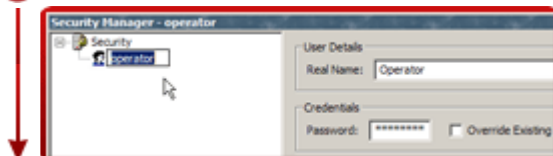
Step 2 Create a new user,



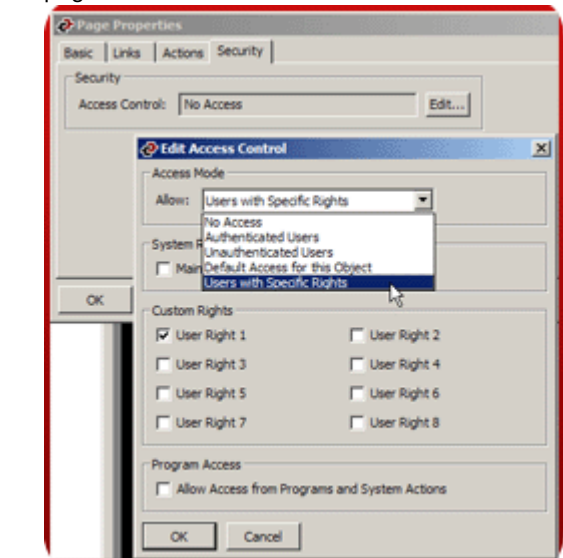
Step 7 Select the page to protect and go to properties,



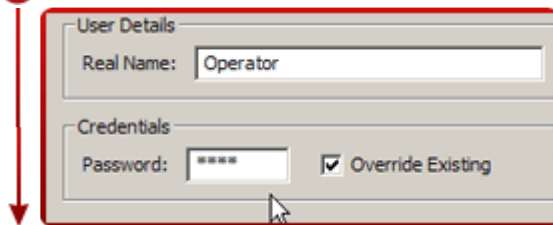
Step 3 Enter a username and real name,



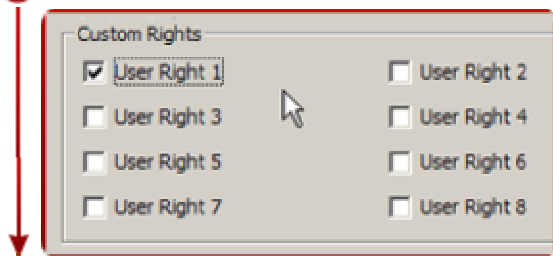
Step 8 On the security tab, edit the access right for this page.



Step 4 Set the password,



Step 5 Assign user rights,



Only users with access right 1 can access the page. Attempts to access this page will result in a login popup window.

Security Manager setup complete!

Reference: <http://www.redlion.net/g3features/G3 Feature - Security Manager.html>
For more information on Crimson 2.0, refer to the manual